



Pelaw Main Public School NEWSLETTER

www.pelawmain-p.school.nsw.edu.au

Ph: 49371314
Fax: 49361204
Postal Address
P.O. Box 87
Kurri Kurri 2327

28 FEB 2014

TERM 1 WEEK 5

DATES FOR THE DIARY

4 March

Snake Tails

5 March

PBL Meeting

6 March

Meet the Teacher
Afternoon from 3.30

11 March

P&C AGM and
Monthly Meeting
1.40pm in the Hall

14 March

School Photos

CANTEEN ROSTER

Mon 3 March

Pam Webb
Kelly James
Sarah Blackmore

Wed 5 March

Judy Mayer
Sheryle Farley
Tammy Whalan

Fri 7 March

Judy Mayer
Julie Williams
Sarah Blackmore

Principal's Report

At the end of last year, several of our students wrote letters to our Defence Force personnel, who were undertaking work in other parts of the world, to wish them a Merry Christmas. This program is called Stockings for Soldiers. Several of our students have, this year, received letters back in appreciation of the efforts. I received a letter on behalf of the school from Petty Officer, Damian Bramstedt, to say:

Thank you very much to all of the kids that have sent my team a special letter and put all of the effort in to writing to us. It is a pleasure to serve our country knowing that we are protecting our future shining stars that are growing up at Pelaw Main Public School. A lovely gesture!

Cricket Team

We are winners! Our Open School Cricket team competed against Mulbring PS on Wednesday at Booth Park. Pelaw Main won the toss and Captain Dylan Fox decided to bowl first. Mulbring posted 79 runs from their 25 overs. Several of our bowlers took wickets with Aidan Sneesby chiming in with 2 wickets. In reply, Pelaw Main reached the target at 3-80. It was a good victory with all of the boys trying really hard in the field, while bowling and when in bat. Dylan Fox top scored with 19 runs. Thank you to Mulbring PS for providing a fun day out.

Are You Aware?

The Child Dental Benefits Schedule (CDBS) commenced on 1 January 2014 and will provide access to benefits for basic dental services to children aged 2-17 years.

It will replace the existing Medicare Teen Dental Plan (MTDP) which was a prevention only scheme.

The total benefit entitlement will be capped at \$1,000 per child over a two calendar year period. A Childs eligibility for the Child Dental Benefits Schedule is assessed at the beginning of each year and requires receipt of Family Tax Benefit Part A (FTB-A) or a relevant Australian Government payment.

The CDBS will provide individual benefits for a range of services including examinations, x-rays, cleaning, fissure sealing, fillings, root canals and extractions. Benefits will not be available for orthodontic or cosmetic dental work and will not be paid for any services provided in a hospital.

Staff Movement

On Monday, 3rd March, Miss Perry and I will be attending a workshop with leaders and teachers from across the Kurri Kurri and Cessnock Learning Communities entitled **Stronger Smarter**. This program - is designed for Principals and school leaders to actively engage the school community so that the whole school has high expectations in relationships and promotes positive identities and excellence in schools.

There will be a series of workshops, across the term, which we will also be attending.

PBL Meeting

The next school PBL Meeting will be held on Wednesday, 5th March at 3:30pm.

This is a re-schedule from the original date of Tuesday, 4th March.

Meet the Teacher

Our Meet the Teacher afternoon/evening is scheduled for Thursday, 6th March from 3:30pm. If you haven't received a meeting time as of yet, please contact your child's classroom teacher for confirmation. These meetings will take place in the school hall.

Cessnock AECG Committee

The Cessnock AECG Committee are calling for interested Aboriginal community members to come forward and nominate to be trained as panel members for merit selection procedures within schools. Schools that conduct merit selection do so to employ staff from a local decision base. Aboriginal community members are an integral component of that decision making process. If you are interested in nominating to take up this opportunity, please contact Mr Graham as soon as possible.

Sports Uniform

Please ensure your child is wearing their sports uniform on Mondays, including joggers/sports shoes and their broad brimmed hat.

Supervision Before School Hours

I would just like to remind parents that school supervision of students begins at 8:45am. Students who arrive at school before 8:45am will have no direct supervision if they are not with their parents or carers.

Lost Property

We currently have a large amount of items in our lost property box. Just a reminder to label lunch boxes, drink bottles and other items that are sent to school with your child's name.

Partners in Print

Our next Partners in Print program will be on Friday, 7th March from 9:30am in 3/4K. Information and an expression of interest will be sent home this week with students in 3/4K.

We hope you are able to attend.

Partners in Print – 9.30am to 10.30am Fridays.

Week 6 – 7th March 3/4K

Week 7 – 14th March 4L

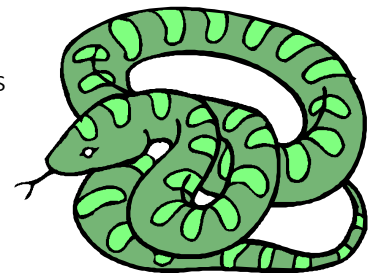
Week 8 – 21st March 5/6B

Week 9 – 28th March Year 5/6G

Snake Tails

This Tuesday, Snake Tails will be coming to talk to the children about reptiles. They are bringing a diverse range of reptiles including pythons, lizards and turtles.

They offer a hands-on and interactive show that aims to educate students about Australia's unique wildlife and our native reptiles. As children seem to be fascinated by reptiles it is advantageous to educate them about their dangers as well as their charms.



Parent Meeting - Canberra

A meeting will be held on Monday 10th March at 3.30 pm in the Library to overview the Canberra excursion details and answer any questions.

Breakfast Club

We would like to have a few more volunteers for our free Breakfast Club this year.

We hope to start running this every Tuesday and Thursday from 8:45-9:15am, starting in March.

Volunteers would need to start at around 8:30 to set up and finish at about 9:30-9:45.

Please see Mr Graham to register your interest and for more information.

P&C News

The AGM will be held at 1.40pm prior to our monthly meeting on Tuesday 11th March. If you are interested in holding an executive position please see Mr Graham or Judy at the Canteen for further details. You do not need to be a member of the P&C to attend the meetings.

ALL P&C VOLUNTEERS - please note - the \$4 levy must be paid and a NEW child safety form needs to be completed BEFORE you commence any activities within the school. Please see the Office asap to update your identification and pay your levy.

School Photos

School Photos will be taken on **Friday 14th March**.

All envelopes need to be returned to the office by Thursday 13th of March regardless of placing a photograph order or not.

Please make sure you include the correct money in your child's envelope as the school does not handle the money and we are unable to give change.

You may also place orders online but envelopes still need to be returned to the office.

Family envelopes can be collected from the office.

These also need to be returned by Thursday 13th of March.

Please note: Photo envelopes will not be accepted at the office on photography day (Friday 14th March). Envelopes will need to go with your child to their classroom.

School Fees

Voluntary School Contribution fees have been set at \$45 per family for 2014. These fees enable us to supply students with classroom resources, such as maths equipment, technology support and stationery. If you are able to make this payment, please do so at the school office. Thank you.

Expression of Interest Newcastle Writers Festival

An expression of interest form was sent home last week to see whether Stage Three students wished to attend the Newcastle Writers Festival on Thursday 3rd April for a cost of \$12 which covers the bus and session cost.

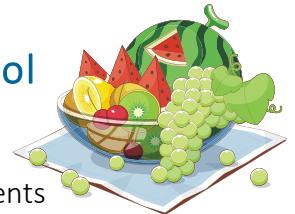
It is a fantastic opportunity for our students to liaise with authors and view displays of world renowned authors and illustrators. To date the response has been minimal. If you would like your child to attend please return your note to Ms Beveridge.

More notes for this wonderful learning opportunity are available from the office.

Live Life Well at School

Lunchbox snack foods

Children need to eat a range of different foods to provide nutrients to meet growth and energy needs. Snacks need to be everyday foods rather than sometimes foods.



Everyday Snacks	Sometimes Snacks
fruit loaf	muesli bars and dried
plain popcorn	fruit bars
plain or fruit yoghurt	potato crisps / chips and
cheese and crackers	corn chips
fresh fruit or canned	lollies and confectionary
fruit	chocolate
dried fruit and cheese	cordial
cubes	soft drink
wholemeal biscuits or	
crackers	
vegetable sticks and dip	
or salsa	
corn or rice cakes with	
or without spreads	
celery, cherry tomatoes	
and carrot sticks	



Crunchy fruit or vegetables when eaten after lunch can help stop tooth decay.

Confectionery and lollies are very high in sugar, provide extra kilojoules and cause tooth decay.

They are not recommended for lunch boxes. Keep these foods for special occasions only.

PELAW MAIN PUBLIC SCHOOL P & C

ASSOCIATION

NEXT MEETING



WHEN: TUESDAY 11th March 2014

WHERE: SCHOOL HALL

TIME: AGM at 1:40PM Meeting to follow.

ALL WELCOME, HOPE TO SEE YOU

THERE!

