



Pelaw Main Public School NEWSLETTER

www.pelawmain-p.school.nsw.edu.au

Ph: 49371314
Fax: 49361204
Postal Address
P.O. Box 87
Kurri Kurri 2327

14 FEB 2014

TERM 1 WEEK 3

DATES FOR THE DIARY

28 February

Zone Swimming
Carnival

4 March

Snake Tails

14 March

School Photos

CANTEEN ROSTER

Mon 17 February

Judy Mayer
Deanne McTegg
Sarah Blackmore

Wed 19 February

Judy Mayer
Sheryle Farley
Tammy Whalan

Fri 21 February

Judy Mayer
Kelly James
Elena Peters

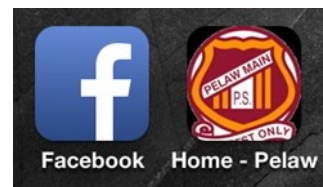
Principal's Report

I must start the newsletter by saying how wonderful our student attendance has been so far this year. I mentioned on the morning assembly on Monday that the swimming carnival attendance and participation rate was the best we have had in a number of years. Our attendance rate target for this year is 94%, meaning 12 days absent in a year. A lot of students will have nowhere near that amount, so it is reachable. Keep coming to school every day. You never know, your child's class may even get to host Ribbit one week! Last week, K/1P and 1K shared Ribbit through the week for having the best attendance.

I mentioned a few items in last week's newsletter about communication between home and school and I would just like to add a few more items of interest in terms of how to access information about upcoming school events. Firstly, our School calendar has been updated on our website and on the school app that I mentioned last week. This has dates for current events that are scheduled for Term 1. As other events pop up on our calendar, they will also be added.

Here is something you might like to try. If you are an avid Facebook user, and have a smartphone, try placing our school app next to your Facebook app and when you click on one to get your latest news feed, click on the other to get our latest newsletter or to check out the calendar. I can't promise too much yet, but these two images above may merge in the near future!

The Canteen Menu and Uniform price list are now on our website. If you click on the Our School tab and go down to the P&C and Canteen link, you will find them both there.



Healthy Lunchbox Information Retraction

I must be clear in retracting some information that was published in last week's newsletter. Most of our families are aware that peanut items, including peanut butter, are NOT able to be brought to school in children's lunches, due to the dangers of anaphylactic reactions that some children may have. Last week, our newsletter carried a Healthy Lunchbox idea from Hunter New England Health with the suggestion that a peanut butter sandwich is a healthy item to bring to school. I apologise for the inconvenience this has caused and would like to remind families to refrain from sending peanut items to school, including chocolate hazelnut products.

Thank you to the families who pointed this out to us.

Partners in Print

Our very successful Partners in Print Program will continue this year. 'Partners in Print' is aimed at developing a three way partnership between parents, teachers and children that helps children learn and develop to their full potential. During Term 1 'Partners in Print' is for students in Years 3 to 6 and their parents/carers. The program will focus on developing reading comprehension and vocabulary skills and empowering parents (who are a child's first teacher) to support students with their reading development at home and to become a strong, positive and caring force in their children's reading development.

Partners in Print will be held each Friday morning, with a different class involved each week. Teachers will lead small group activities based around reading with parents/caregivers and their child. In small groups, teachers will work with the students and model a strategy that parents and caregivers can use at home to support children's reading comprehension and vocabulary development. Parents and carers will watch how the teacher works with the students and then work with their own child one-on-one to practise the strategy they observed the teacher implement. The process is child centred, relaxed and enjoyable.

Please find below a timetable for classes to participate in Partners in Print for Term 1.

Parents from each class will receive a letter home the week before the class participates in the program.

Partners in Print – 9.30am to 10.30am Fridays.

Week 4 – 21st February 3W

Week 6 – 7th March 3/4K

Week 7 – 14th March 4L

Week 8 – 21st March 5/6B

Week 9 – 28th March Year 5/6G

School Uniform

Lowes Menswear at Cessnock have assured me that they will continue to stock Pelaw Main Public School uniforms, including the new tri-colour polo.

Several parents had difficulty accessing the new polo shirt from Lowes over the holidays and this communication breakdown has now been resolved. However, there may be a delay in the ordering of their stock.

The P&C do stock plenty of our uniform items and have them available for sale on Mondays, Wednesdays and Fridays from 8:45am. If any of these days do not suit, please contact the office with your details and a member of the P&C will contact you to arrange a time to pick up uniforms. The P&C have added a new item to the Sports uniform. The maroon A-line skirt with shorts are \$15 each.



P&C News

Our first P&C meeting on Tuesday had a great turn out of parents; we hope to see that trend continue to increase. A reminder also that you do not need to be a member of the P&C to attend the meetings. The AGM is held next month prior to our monthly meeting- Tuesday 11th March at 1:30pm. If you are interested in holding an executive position please see Mr Graham or Judy at the Canteen for further details.

ALL P&C VOLUNTEERS - please note - the \$4 levy must be paid and a NEW child safety form needs to be completed BEFORE you commence any activities within the school. Please see the Office asap to update your identification and pay your levy.

Meet the Teacher Evening

We will be hosting a Meet the Teacher afternoon/evening on Thursday, 6th March from 3:45pm. A letter will be sent home soon, in regards to selecting a preferred time for this meeting. There will be 15 minute allocated timeslots to ensure every parent possible can meet with their child's teacher.

School Fees

Voluntary School Contribution fees have been set at \$45 per family for 2014. These fees enable us to supply students with classroom resources, such as maths equipment, technology support and stationery. If you are able to make this payment, please do so at the school office. Thank you.

Snake Tails

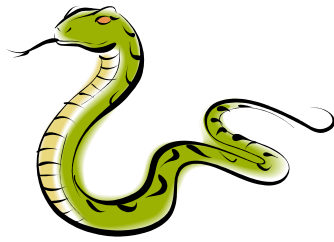
This term we have invited Snake Tails to come and talk to the children about reptiles. They bring a diverse range of reptiles including pythons, lizards and turtles.

They offer a hands-on and interactive show that aims to educate students about Australia's unique wildlife and our native reptiles. As children seem to be fascinated by reptiles it is advantageous to educate them about their dangers as well as their charms. We hope that every child will be able to attend this presentation.

Date: Tuesday, 4th March

Cost: \$6 per student

A permission note was sent home yesterday. Please fill in the permission note and return it to the office with the \$6 by Friday, 28th February 2014.



Breakfast Club

We would like to have a few more volunteers for our free Breakfast Club this year.

We hope to start running this every Tuesday and

Thursday from 8:45-9:15am, starting in March. Volunteers would need to start at around 8:30 to set up and finish at about 9:30-9:45. Please see Mr Graham to register your interest and for more information.



How Much Water do Children Need?

The amount of fluid that children need varies between individual children. The older the child, the more fluid they need. Children should drink approximately 1-1½ litres of fluid a day. Children will need more when they are physically active and on hot and humid days. Water is the best drink – for both children and adults – in all situations.



BACK TO PRESCHOOL AFTERNOON TEA

We would like to invite all children who attended Kurri Kurri Pre-school last year to attend our

At Kurri Kurri Preschool
Thursday 20th February 2013
From 3.30 – 4.30pm

Please RSVP to Toni or Di

Or email kurripreschool@bigpond.com

Looking forward to seeing you all!

Kurri Kurri Preschool are currently taking names for children requiring preschool education for children eligible to attend preschool up to 2016 ie. Born before 31.7.2012.

We also still have positions available for 2014.

Please contact Kurri Kurri Preschool on 49372110 for further information.

Kurri Kurri & District Pre-school
Kindergarten Inc.

P O Box 156 KURRI KURRI NSW 2327

Cnr Tarro & Boundary Street,
Spion Kop NSW 2327

Ph: 02 49372110 Fax: 02 49364810

www.kurripreschool.com

email: kurripreschool@bigpond.com



TRIPLE P SELECT PROGRAM

Triple P Parent Seminars

The power of positive parenting	Thursday 13 March 2014
Raising confident, competent children	Thursday 20 March 2014
Raising resilient children	Thursday 27 March 2014

Time: 10.00 am - 12.00 pm

at
Samaritans Neighbourhood Centre
198-202 Vincent Street, Cessnock

To book a place or for more information please phone

CESSNOCK FAMILY SUPPORT SERVICE

on
4990 4507



Seminars are presented by an accredited Triple P practitioner

Financial assistance for this service is provided by Community Services, Department of Family and Community Services NSW



1-2-3 MAGIC® & EMOTION COACHING PARENT COURSE

Learn to manage difficult behavior in children 2-12 years old

A three-session program for parents and carers

at **Cessnock Family Support Service**

5 Hall Street, Cessnock

on **Wednesdays 26 February, 5 March & 12 March 2014** at **10am to 12.30pm**

Learn:

- ✓ How to discipline without arguing, yelling or smacking
- ✓ How to sort behaviour
- ✓ How to handle challenging and testing behaviours
- ✓ Choosing your strategy, the three choices
- ✓ Using emotion coaching to encourage good behaviour
- ✓ 7 tactics for encouraging good behaviour

Parents will receive:

- A 1-2-3 Magic & Emotion Coaching Parent Workbook
- The course is free, morning tea is provided
No childcare available

Register for this course by contacting **Cessnock Family Support Service** on **4990 4507**

What people are saying...

What a relief to come across a program that preserves the dignity of the child, maintains the self control of both the parent and the child and is actually easy to remember when memory is the first thing to go!

I realized quickly that the 1-2-3 Magic can be a magnificent preventative measure that any parent can use to avoid raising a child, who later down the line, needs excessive discipline or grows out of control

Who is running it?

The presenters for this course have completed Parents' 1-2-3 Magic® & Emotion Coaching practitioner training and are employed by Cessnock Family Support Service.



For more information contact: Cessnock Family Support 4990 4507

- An end to the arguing and yelling! • It saved our lives • Simple, sane, effective

This course is being run by a Parents' 1-2-3 Magic® licensed practitioner. www.parentshop.com.au